

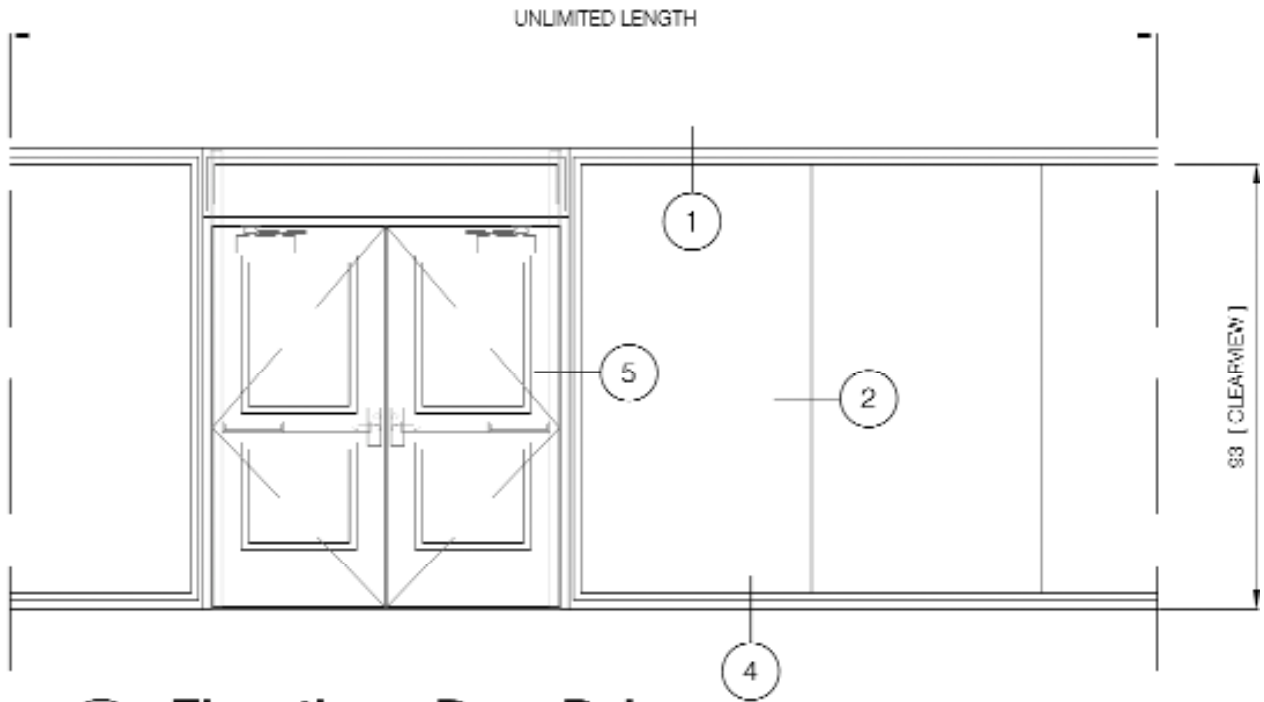
60-MINUTE FIRE-RATED UNLIMITED GLAZING SYSTEM

Vision-60™

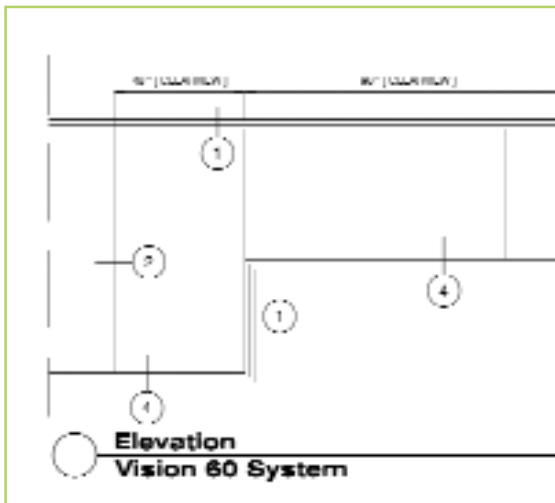
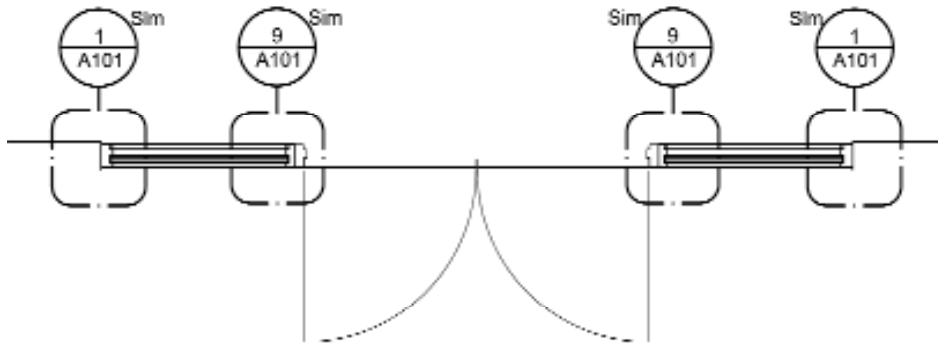
The Vision-60™ System –the unique and exclusive 60-minute butt-glazed transparent wall system–utilizes Pyrobel® 60 glazing and the Quick-Frame or StileLite frames at the perimeter, eliminating all intermediate framing mullions for truly free and open vision.

Available online:

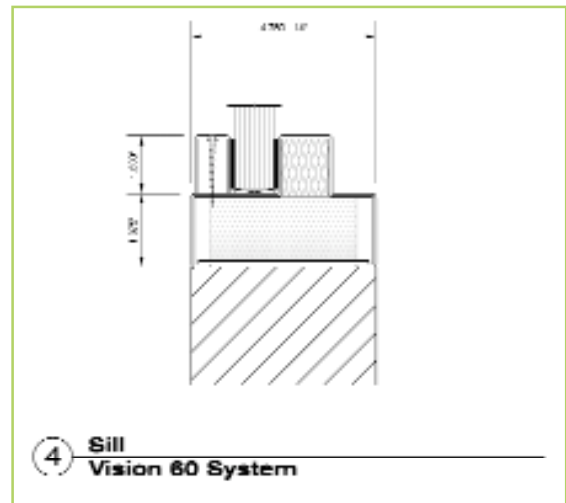
- > **BIM and CAD details**
- > **CSI specifications**
- > **Project photo gallery**



○ **Elevation - Door Pair**
Vision 60 System

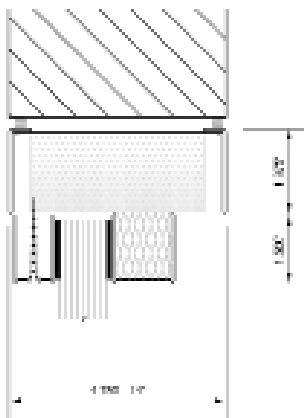


○ **Elevation**
Vision 60 System

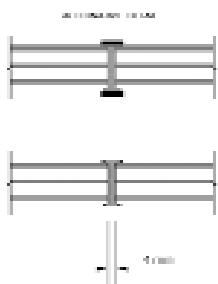


○ **4 Sill**
Vision 60 System

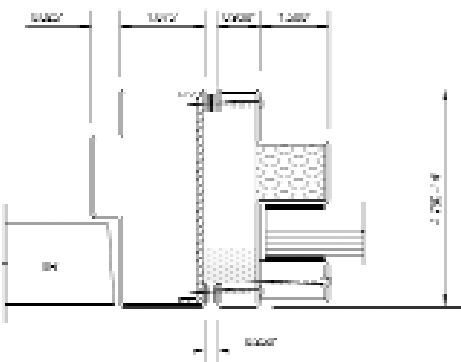
Details shown utilize the StileLite-100™ perimeter framing system. Please refer to our website for additional perimeter framing details.



① **Jamb
Vision 60 System**



② **Vertical Joint
Vision 60 System**



⑤ **Door Jamb
Vision 60 System**

VISION-60™ SYSTEM FEATURES & BENEFITS:

- Continuously glazed transparent wall, uninterrupted by intermediate framing
- Unlimited number of glass panels can be glazed into the wall—subject to structural engineering approval
- Perimeter framing can be Quick-Frame™, StileLite-100™, or StileLite-200™ with 1-1/2" stop height
- Pyrobel-60® glazing panels available in a maximum size of 48" x 93" if glazed vertically, or 45" x 96" if glazed horizontally (glazing cannot be stacked)
- Glass panels are separated by no more than 4mm of space, glazed with 100% pure silicone
- Decorative profiles of aluminum, wood, or steel may be applied to the face of the glazing without affecting the performance of the system
- Full lite doors (single or pair) can be incorporated into the Vision-60™ System for a continuous glazed wall

INSTALLATION GUIDELINES:

- Pyrobel-60-25 glazing provided with arris cut at butt edge of glass
- Space between glazing not to exceed 4mm
- Dow Corning 745s neutral silicone (or other 100% pure silicone) caulking to be pressure-glazed at butt joints only and cured for a minimum of 30 days
- Pyrobel must be glazed with 3/16" x 1-1/4" closed cell foam glazing tape with neutral cure silicone around the perimeter of both sides of glass (perimeter silicone must not be pressure glazed)
- PEMKO 3000S45 intumescent tape to be applied at the top stops in addition to closed cell foam tape (apply PEMKO tape on top of close cell foam tape to form two layers)

Due to the complex nature of this wall system, glazing instructions must be followed explicitly in order to maintain the manufacturer's guarantee.

For additional BIM and CAD details, and CSI specifications, please view or download online at www.firesafe-glass.com

160 North High Street

P.O. Box 220

Hebron, Ohio 43025

Toll-free: (877) 376-3343

Telephone: (415) 331-6379

Fax: (415) 289-0326

www.firesafe-glass.com

The Vision-60™ System complies with the following test standards: ASTM E-119 (1998), NFPA-251 (1999), UBC 7-1 (1997), CAN/ULC-101-M89, UL-263. Test report number WHI 495-1698 and WHI 495-1679.

As with any project, we recommend you consult with the local authority having jurisdiction before specifying a product. For the most recent information on framing and glazing products and their limitations, please contact InterEdge Technologies at (877) 376-3343. For 3-part CSI specifications and downloadable CAD and BIM details, please visit us online at www.firesafe-glass.com

©2011 InterEdge Technologies. All rights reserved. PyroEdge, Quick-Frame, StileLite and Vision-60 System are trademarks of AGC InterEdge Technologies. Pyrobel is a registered trademark of AGC Flat Glass Europe. All others are trademarks of their respective owners.

